

TPS1

SMART WIRELESS MEAT THERMOMETER

USER MANUAL

V1.0

PRODUCT OVERVIEW



Overview

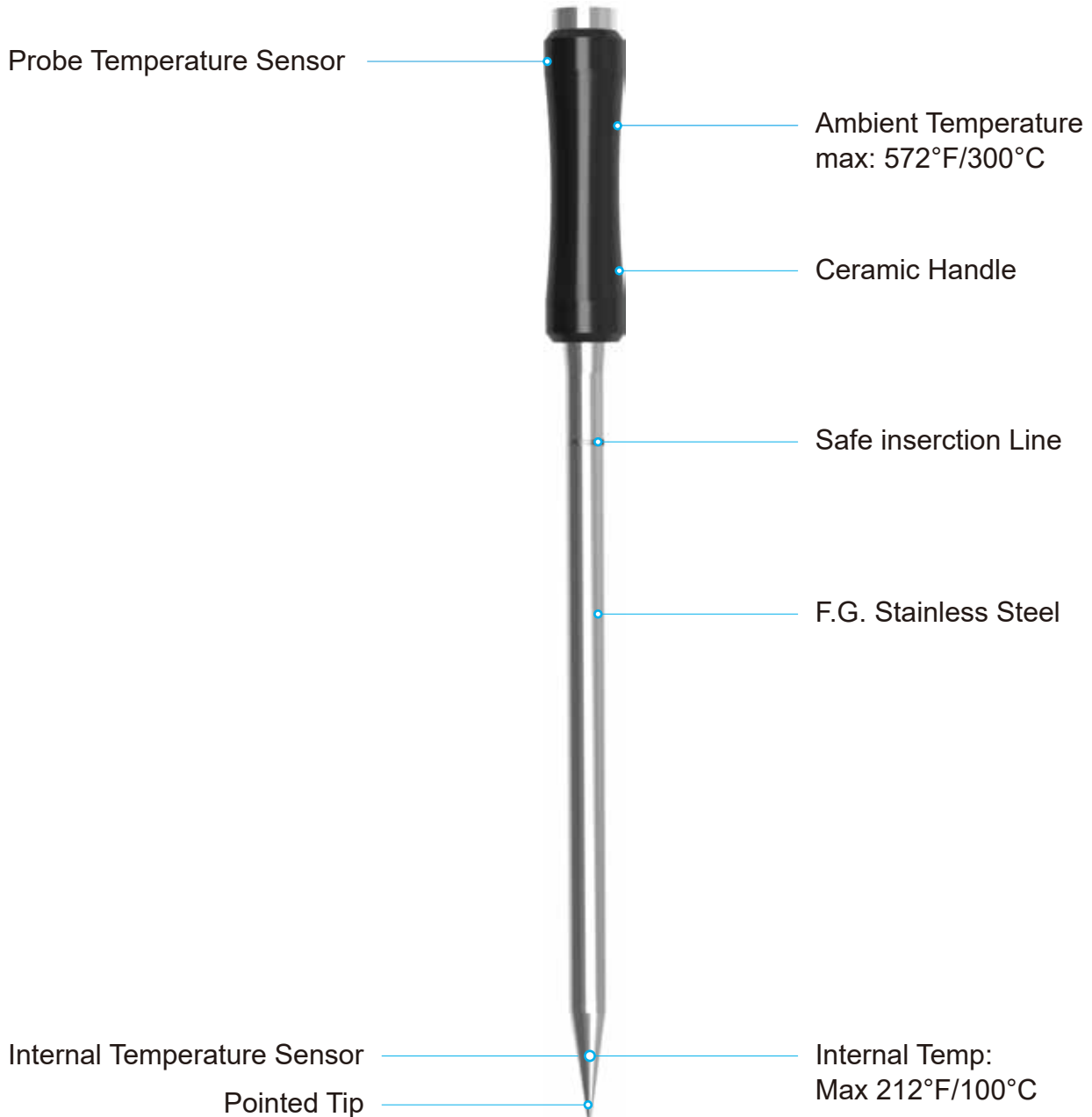
Thank you for choosing and using TOPOS smart wireless meat thermometer. Please read this manual carefully before using.

TOPOS smart wireless thermometer with bluetooth is an ideal choice for BBQ, oven, grill, kitchen, smoker or rotisserie. It ensures perfect and precise results each time when you cook. You can easily monitor your cooking progress using the free APP, which is available for both iOS (version 11.0 and later) and Android (version 6.0 and later) smartphones and tablets. You can also set up custom alerts and notifications based on temperature and/or time. The APP can estimate the ideal cooking and preparation time for your food.

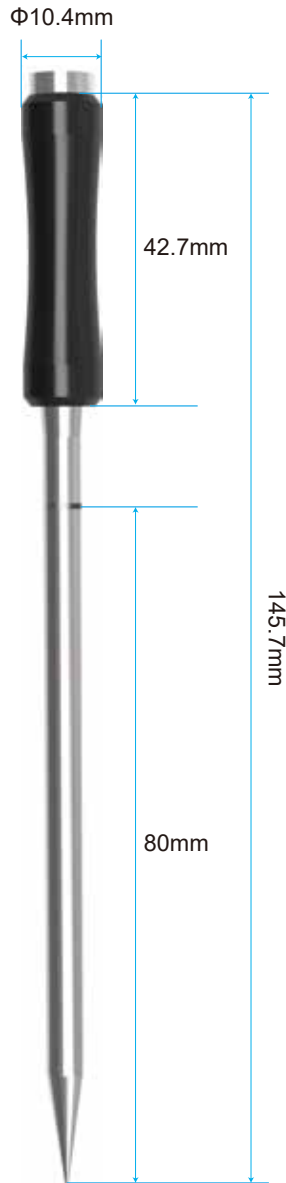
Product Specifications

Bluetooth Version 5.1	Internal temperature range: -20~100 °C / -4~212 °F
APP name: AIBBQ	Ambient temperature range: 0-300 °C / 32~572 °F
Wireless distance: Max 60m/196feet	Probe charging time: 120 min
Probe standby time: 36 hours	Waterproof: IP 67 (probe)

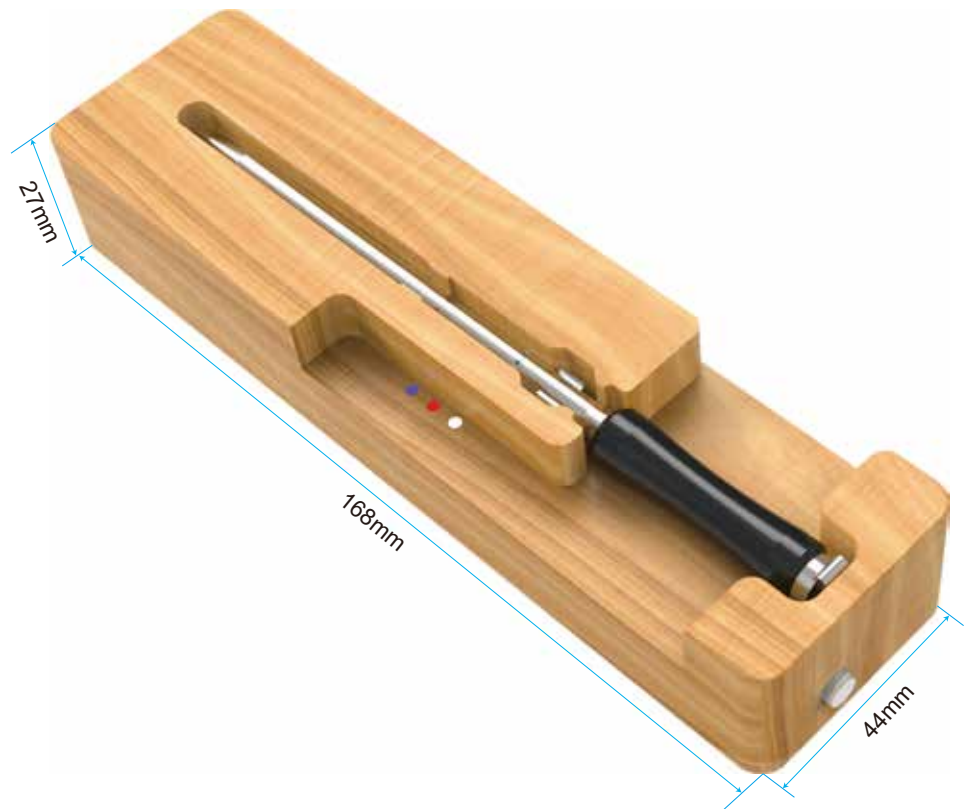
Probe Description



Probe Size (mm)

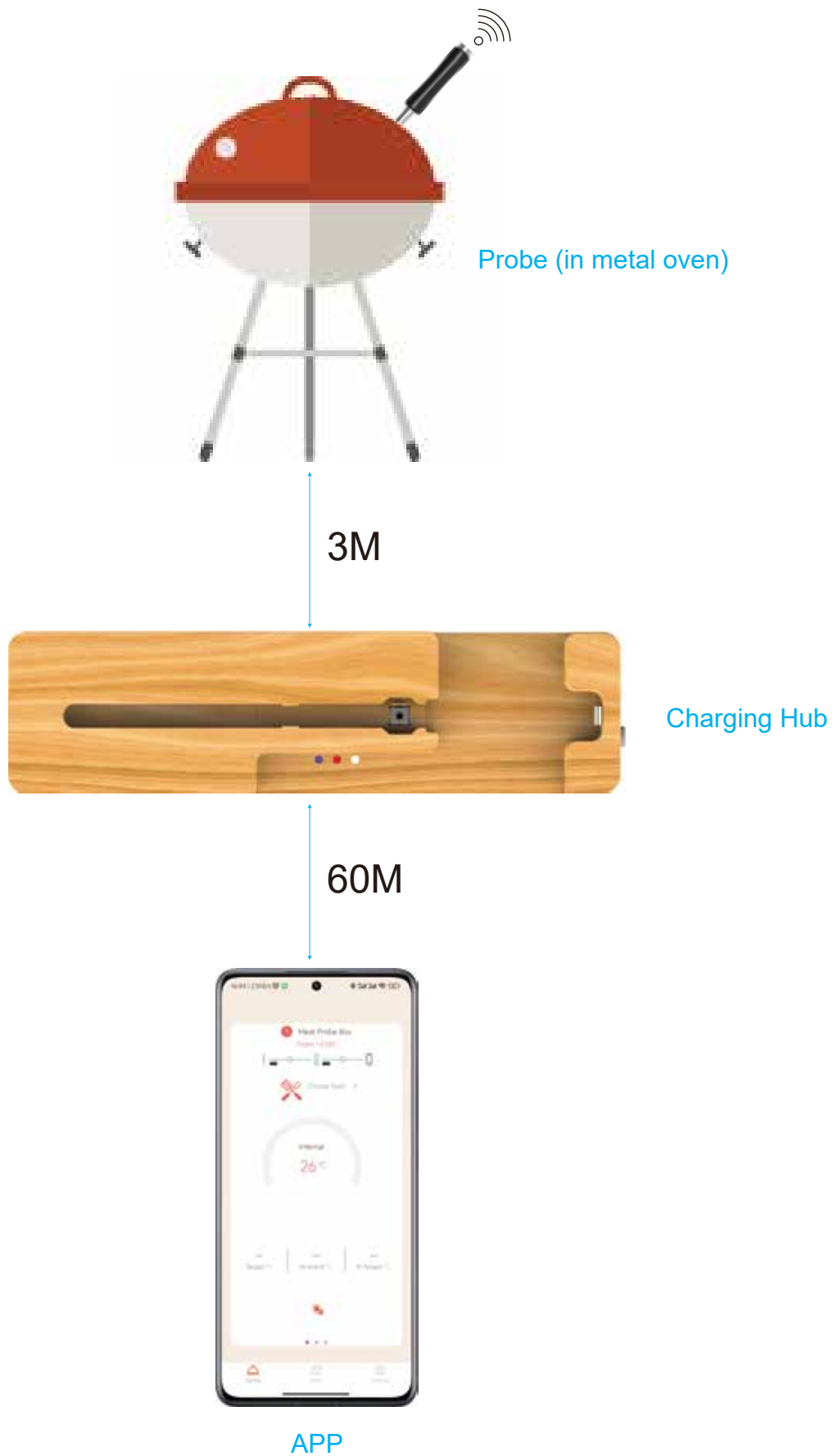


Probe



Charging Hub

Probe Distance (M)



Connect to the APP for Use

The wireless connecting range between your APP and the charging hub is preferable less than 60M.

Place the charging hub near (never in or on) the cooking appliance. The hub works most efficiently if approaching the probe during cooking (Max 3M), especially when the probe is in a closed environment.

Download the APP

Search the keyword "AIBBQ" in App Store or Google Play, or scan the following QR code.

NOTE:

The APP DOES NOT collect personal information from users. Please rest assured to use it!



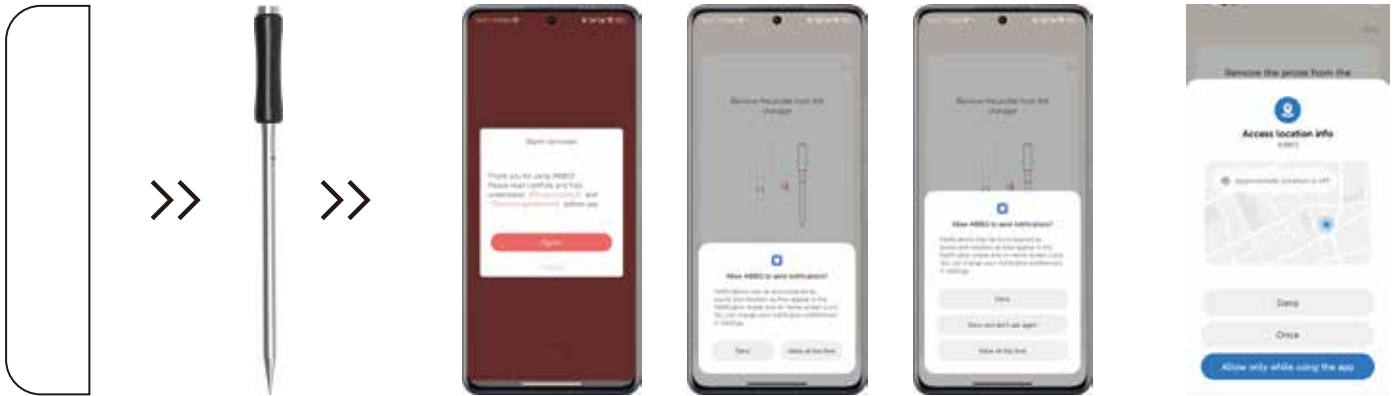
iOS 11.0 and above, Android 6.0 above.



TOPOS Website

Install the Application and Connect Devices

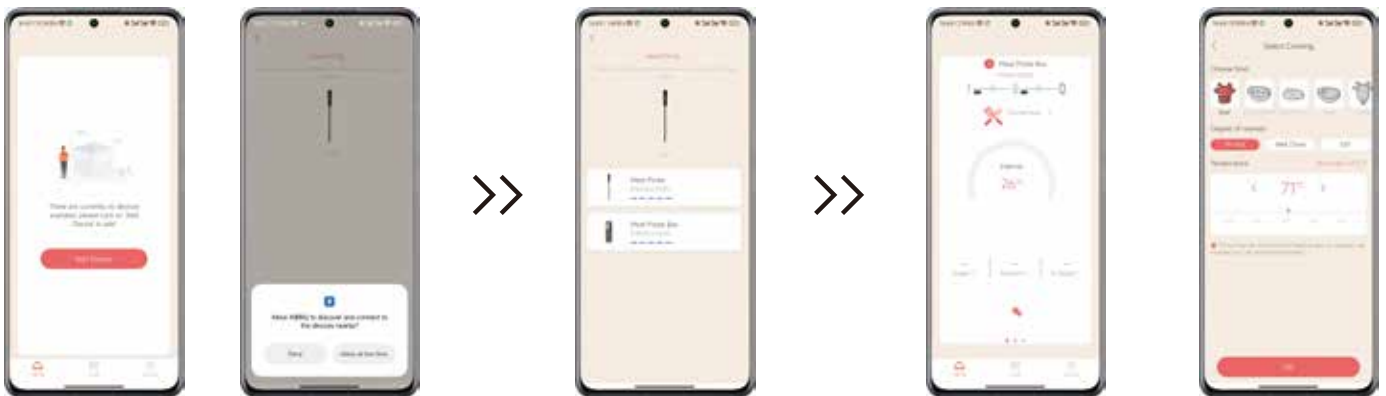
Turn on Bluetooth on your phone. The Android phone must have both Bluetooth and location service enabled, as well as allow notification services. (Notification includes alarm sound and pop-up icon).



A. Take the probe out of charging box and wait for pairing

B. Start AIBBQ APP, pair the device (Phone or tablet) with the probe

C. Agree to locate permissions (Android mobile system must agree)



D. Start the APP and click "Add Device"

E. Find the device (e.g., meat probe) to pair

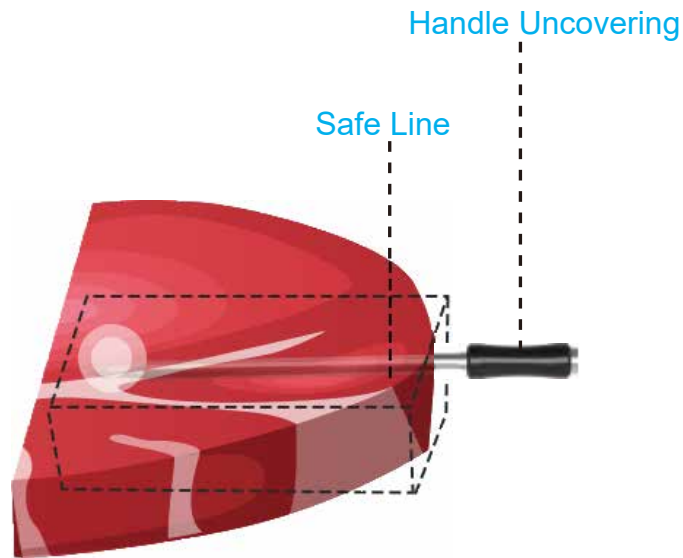
F. After pairing the probe, click "Choose Food" Choose the food to prepare

G. Choose the food to be cooked

Safety Notice

In order to best connect the probe with the mobile phone or tablet, please keep the phone/tablet within 3 meters or 10 feet of the cooker. Due to the high surface temperature of cooking equipment, please do not place the hub directly on the surface of or close to the cooking equipment.

The safe operating temperature of the host is: - 20 to +60°C



The probe shall be inserted properly for best effect. The wrong insertion method may cause inaccurate temperature measurement or even damage to the probe.



One-third of the probe



Probe partially exposed



Probe Directly Above the Flame



Safety Notice Important Security Information

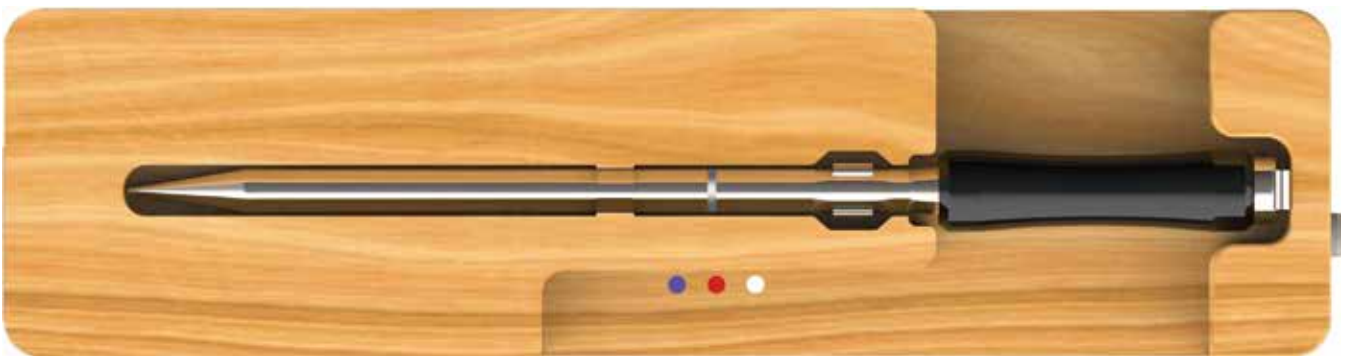
- Use the probe only for the intended purpose. The probe is designed for meat (food).
- Do not immerse the charging hub in water or other liquid to avoid the risk of electric shock.
- Please insert the probe into the meat deep enough to reach safe line to protect the probe from damage.
- Do not insert any part of the ceramic handle into the meat to maintain the best performance of the product
- Do not use the probe in a microwave oven or pressure cooker.
- Do not expose the wireless grill thermometer and probe directly to ovens. Do not drop the probe on hard surface.
- Do not clean the probe by a dishwasher. Wash the probe with soap and water before and after using by hand.
- Make sure the probe is completely dry when putting it back into the charger
- Do not immerse the probe in water even though it is waterproof.
- Please pay attention to the sharp tip of the probe to avoid any damage.
- Do not touch it without using hot pads after cooking as the probe temperature can be very high.
- Do not immerse the probe in cold water after cooking. Wait until the probes cool down before washing.
- The probe is not toy. Close supervision is required when the probe used by or near children.
- Do not use this product outdoors in rain, thunderstorm or under other severe weather conditions.

Various Types

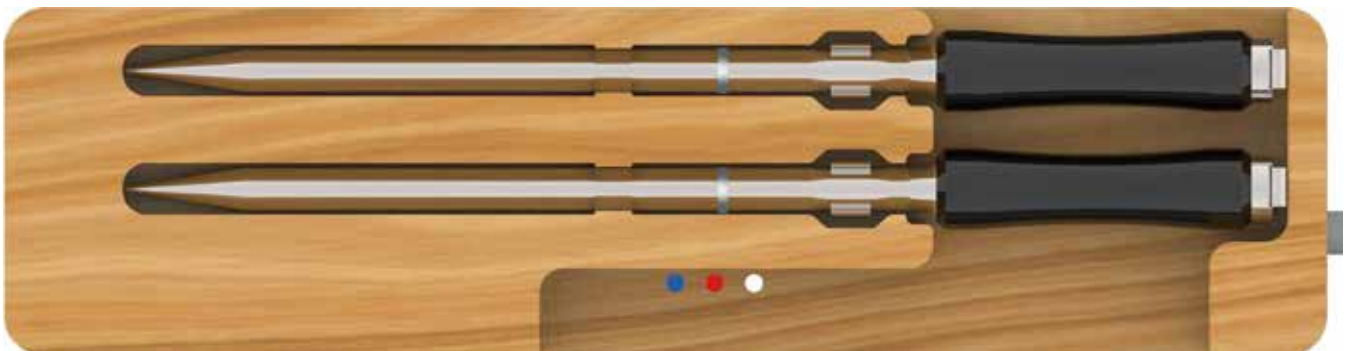
1. More appearance forms are optional or customized for probe



2. More appearance forms are optional or customized for charging hub



Probe Directly Above the Flame



Double Probe Charging Hub